

# **Instruction for Additel 22XA Firmware Upgrade**

**V1.0**

**7/3/2015**

## Step1.

### Warning:

- Backup all tasks and snapshot files to avoid file damage or loss before upgrade.
- Do not use power adaptor in the whole process, only use battery to supply power.

Connect the calibrator to the computer via RS232 (may need RS232 to USB adapter), and turn on the instrument.

## Step2.

Double-click on the app Additel/Terminal to start the program, then click [Scan] button to obtain the instruments connected to the computer. (shown as Figure 1).

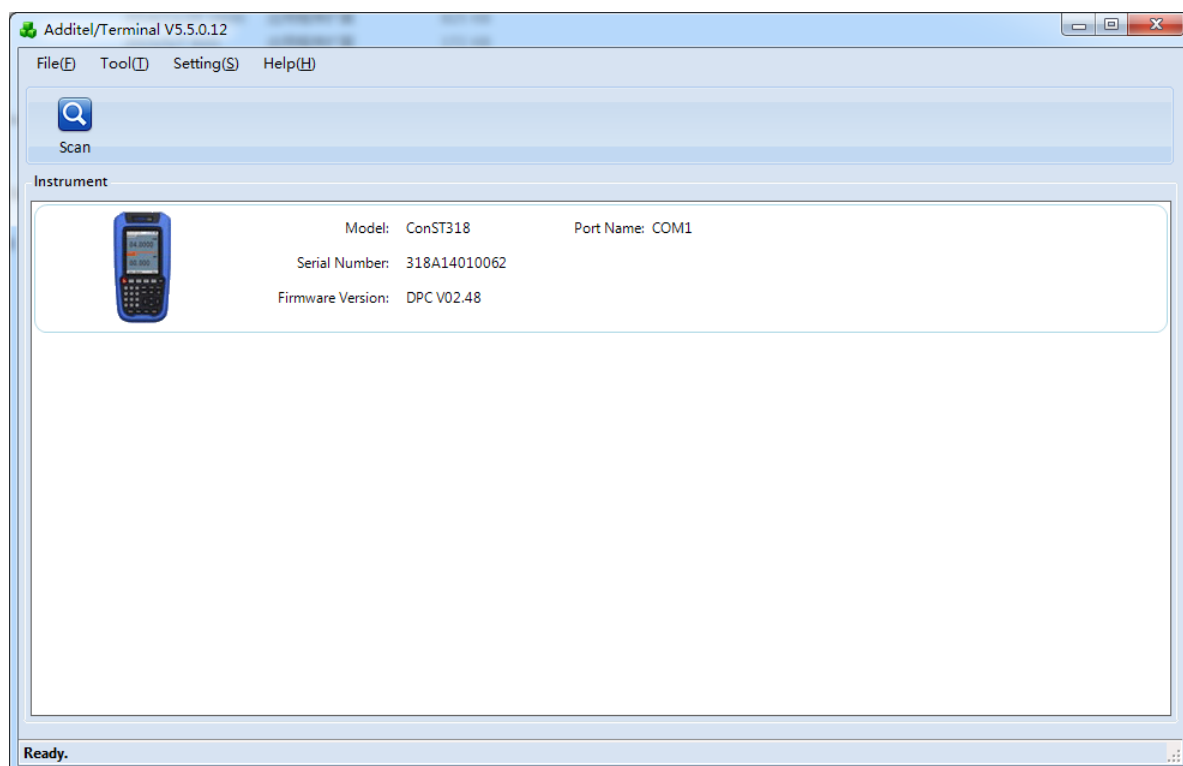


Figure 1

**Note:**

If the instrument that you want is not in the list, please check the following:

- (1) The serial cable is connected properly.
- (2) The instrument is powered on.
- (3) The instrument baud rate for the serial port is set to 9600 bps.
- (4) The Terminal Upgrading software is not compatible with the instrument firmware, you can go to "**Setup**" -> "**Information**" -> "**Sys Info**" on the instrument to view the software version, hardware version and serial number, and then contact us ([www.additel.com](http://www.additel.com)).

### Step3.

Choose the correct instrument, the Firmware Upgrade dialog is displayed (shown as Figure 2).

**Note:**

If the local service package is not found, you can go to "**Setup**" -> "**Information**" -> "**Sys Info**" on the instrument to view the software version, hardware version and serial number, and then contact us ([www.additel.com](http://www.additel.com)).

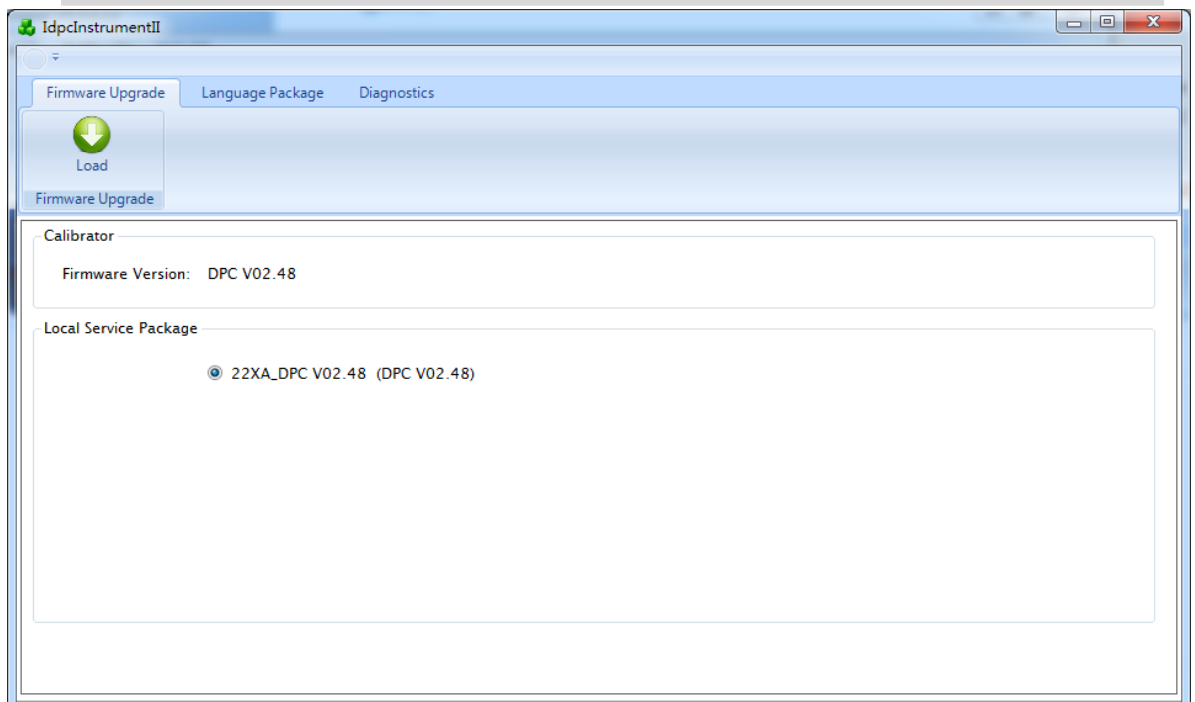


Figure 2

Click **[Load]** button to start upgrade firmware, as Figure 3.

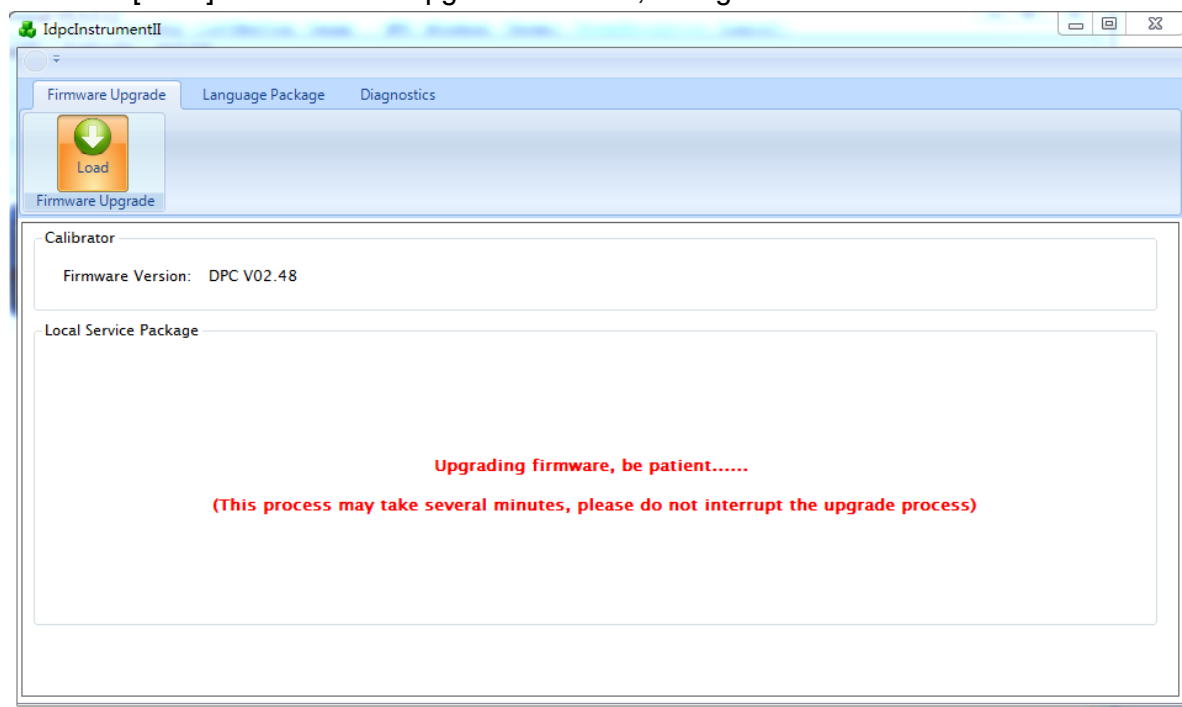


Figure 3

**Warning:**

- It is important not to interrupt the updating process. This may cause the upgrade to fail, which will cause the instrument does not work.

When the firmware upgrade is completed, you will see the dialog box (shown as Figure 4).

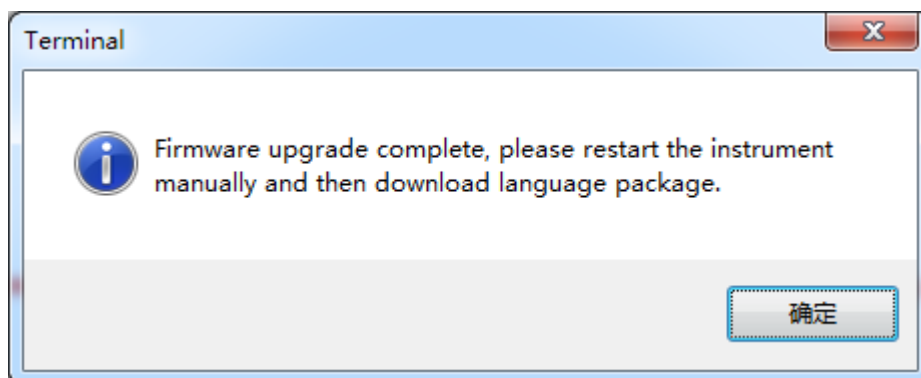


Figure 4

## Step4.

Please reboot the calibrator manually.

## Step5.

Select the [Language Package](#) tab, you will see the language package information (shown as Figure 5).

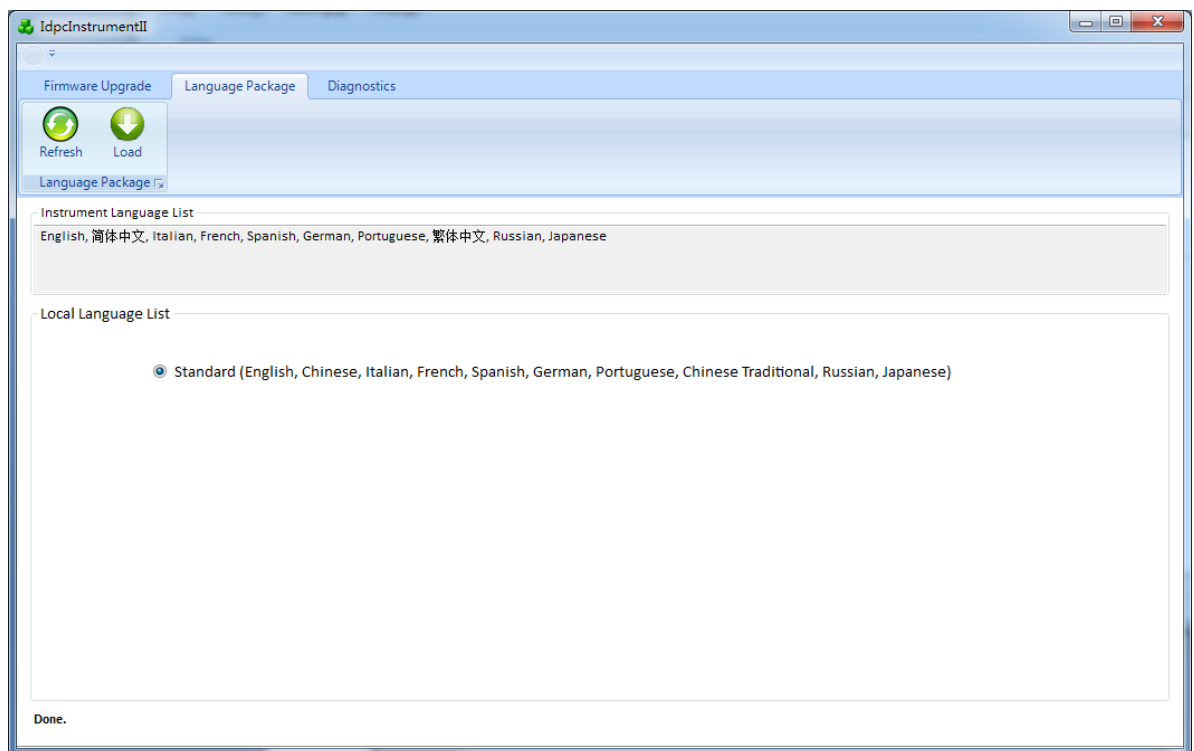


Figure 5

Click [\[Load\]](#) button to start upgrade languages, as Figure 6. The loading progress will be shown at the bottom of the dialog.

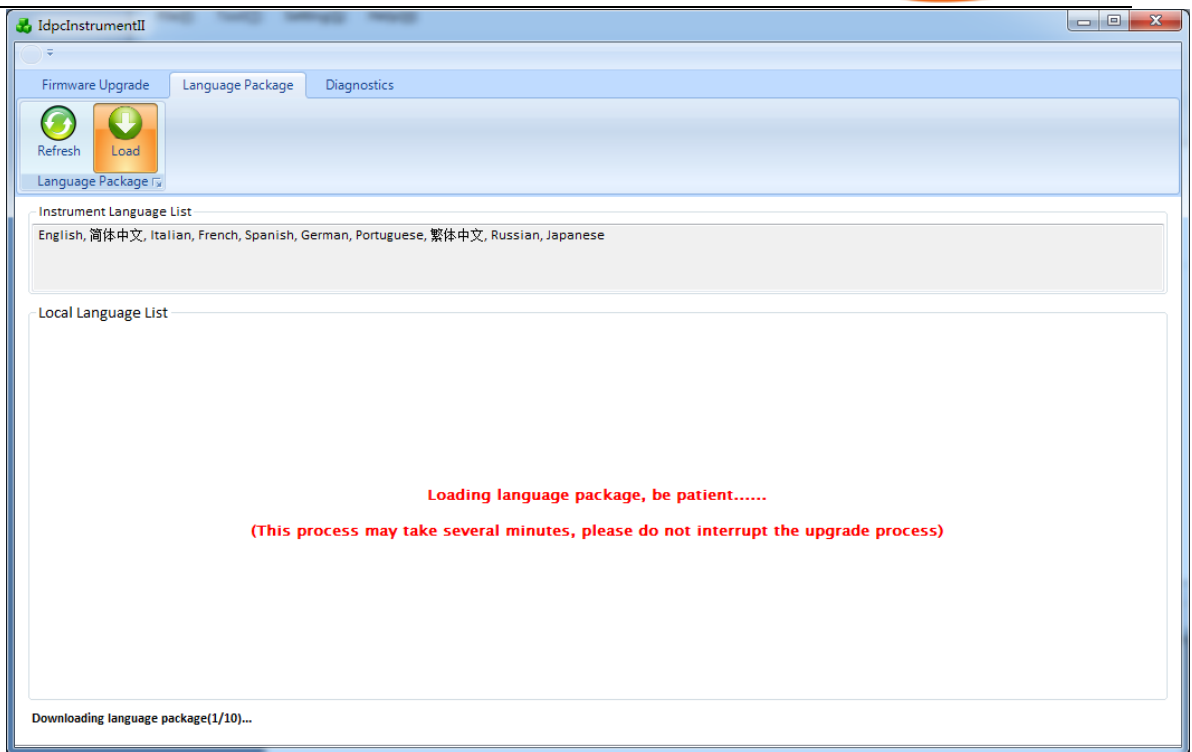


Figure 6