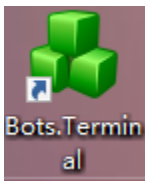


Bots.Terminal

Directions for user

1、 Start the software



Double-click the icon to start the software in folder AdditelTerminal.



Figure 1-1 startScreen

Figure 1-2 shows the main screen after correct startup.

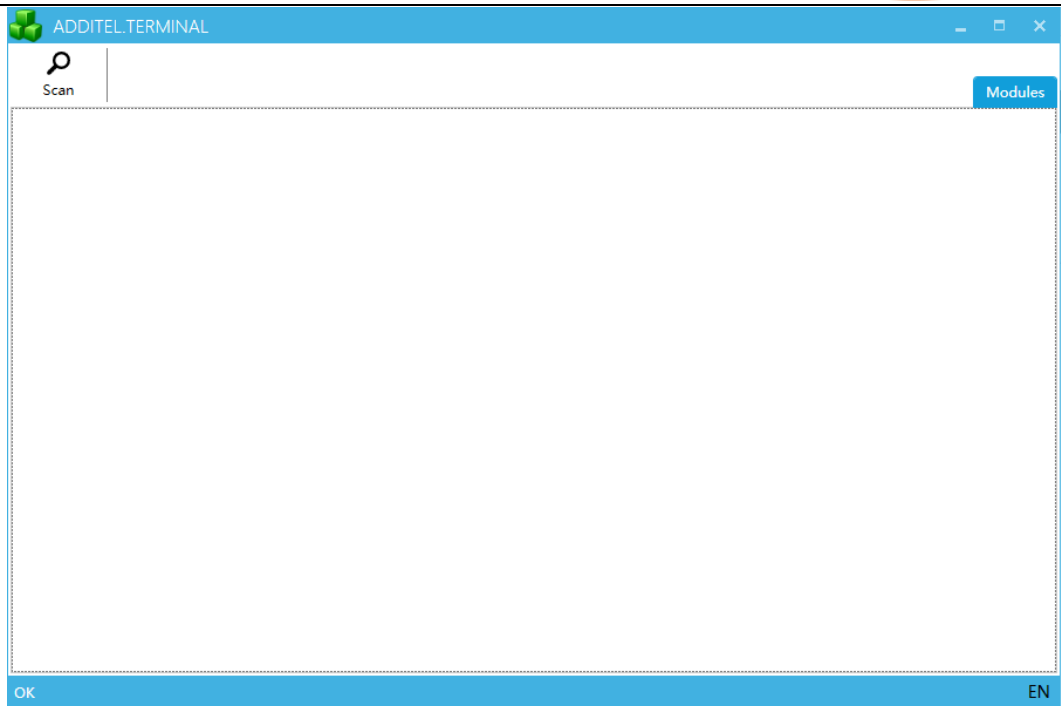


Figure 1-2 main screen

Click Lower right corner of software EN or ZH to set the language, as shown in Figure 1-3 After selecting a language, the application program restarts to switch to the selected language.

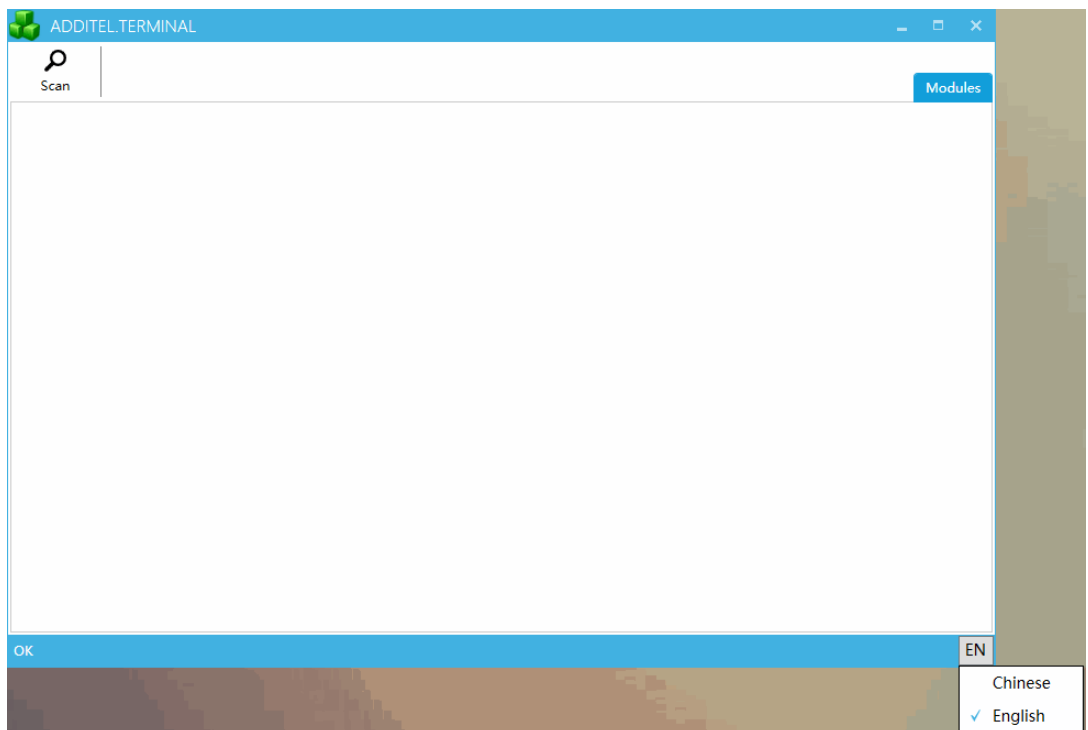


Figure 1-3 change language

2、Scan

Click the [Scan] button to find the devices to be upgraded. Of course, you need to connect the device to your computer first, and make sure the driver is installed and communicating properly.

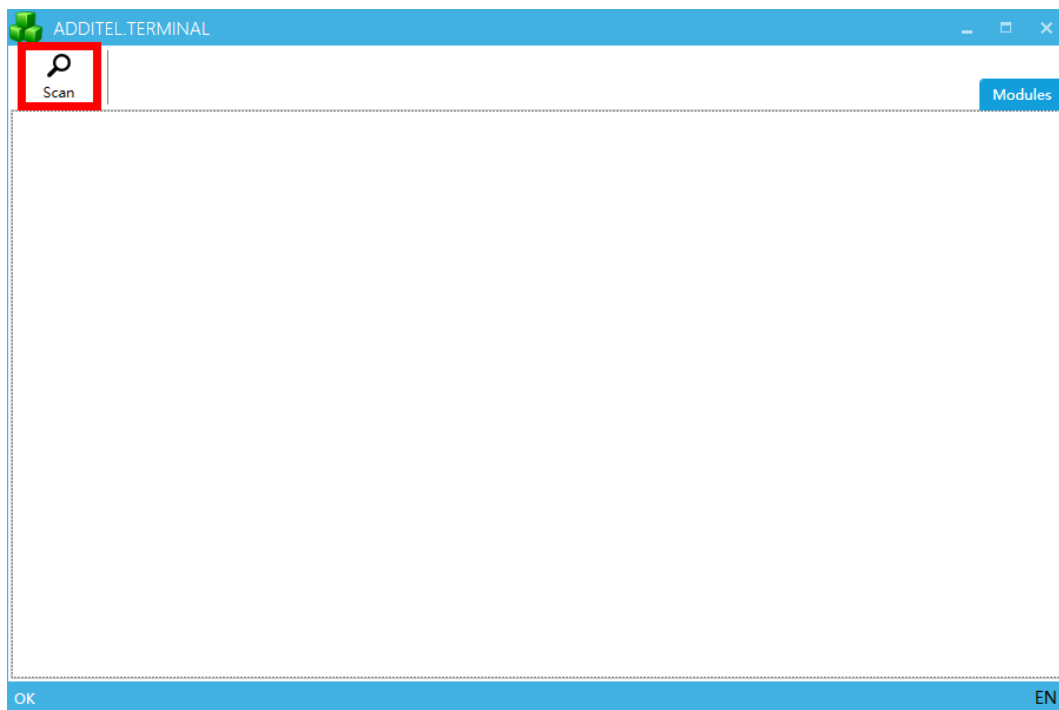


Figure 3-1 start scanning

After clicking scan, the software starts to scan the device, and the progress bar is displayed in the lower left corner of the software. At this time, users can click the button to stop scanning, as shown in Figure 3-2.

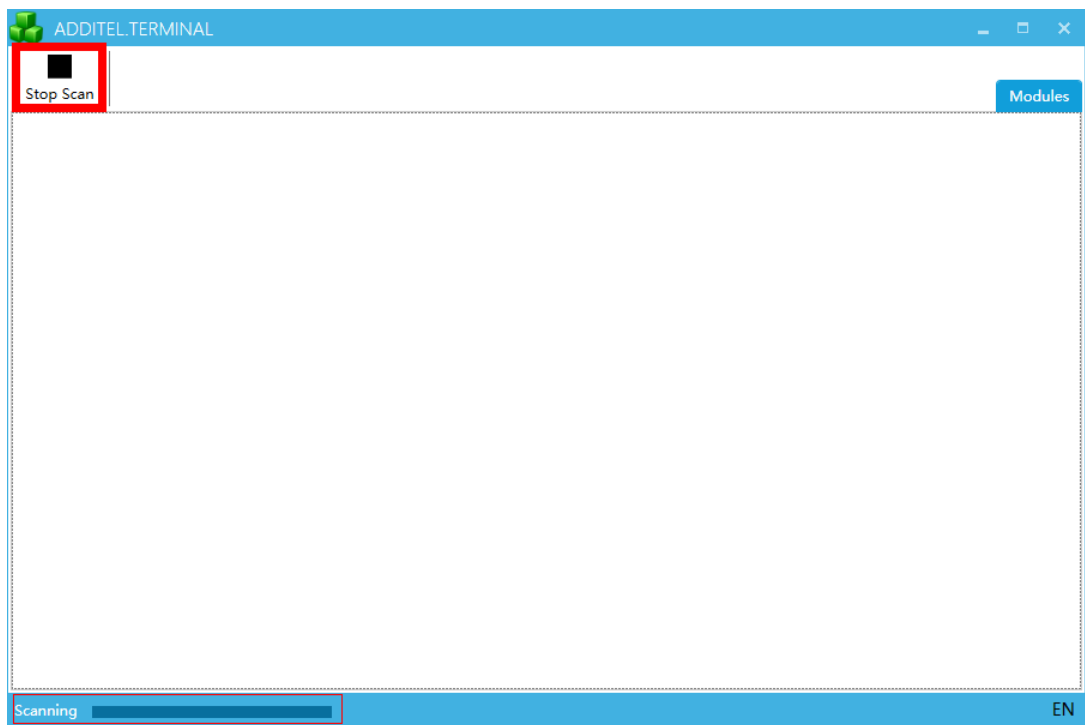


Figure 3-2 scanning

After the scan is complete, the software displays the devices to be upgraded, as shown in the figure 3-3

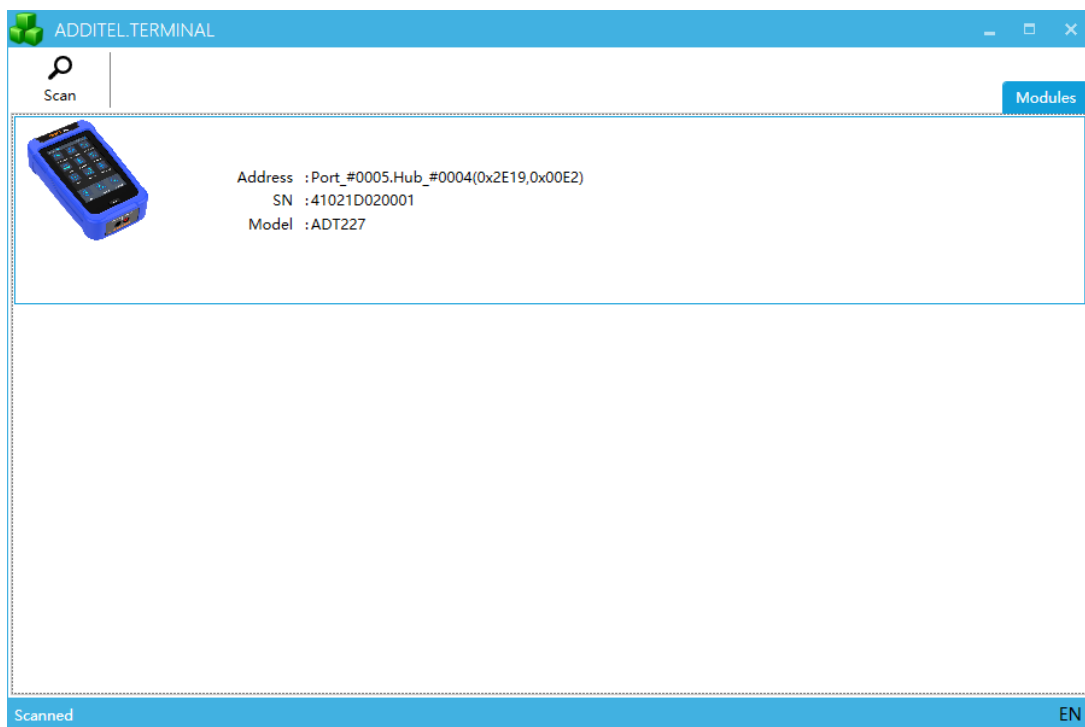





Figure 3-3 scan is complete


3、Upgrade


ADDITEL TERMINAL


Scan




Address :Port_#0005.Hub_#0004(0x2E19,0x00E2)
SN :41021D020001
Model :ADT227





Click this area to jump to the upgrade interface


Modules

Scanned
EN


MODULE UPGRADE


UpgradeFile


Upgrade



SN: 41021D020001
Model: ADT227

	Current Version	Update Version
Firmware Version:	DPC-HOST 0.0.0.16	
EM:	EM-EX V00.00.00.22	
ES:	ES-EX V00.00.00.23	
TMS:	TMS-EX V00.00.00.26	
ACM:	ACM V00.00.00.14	

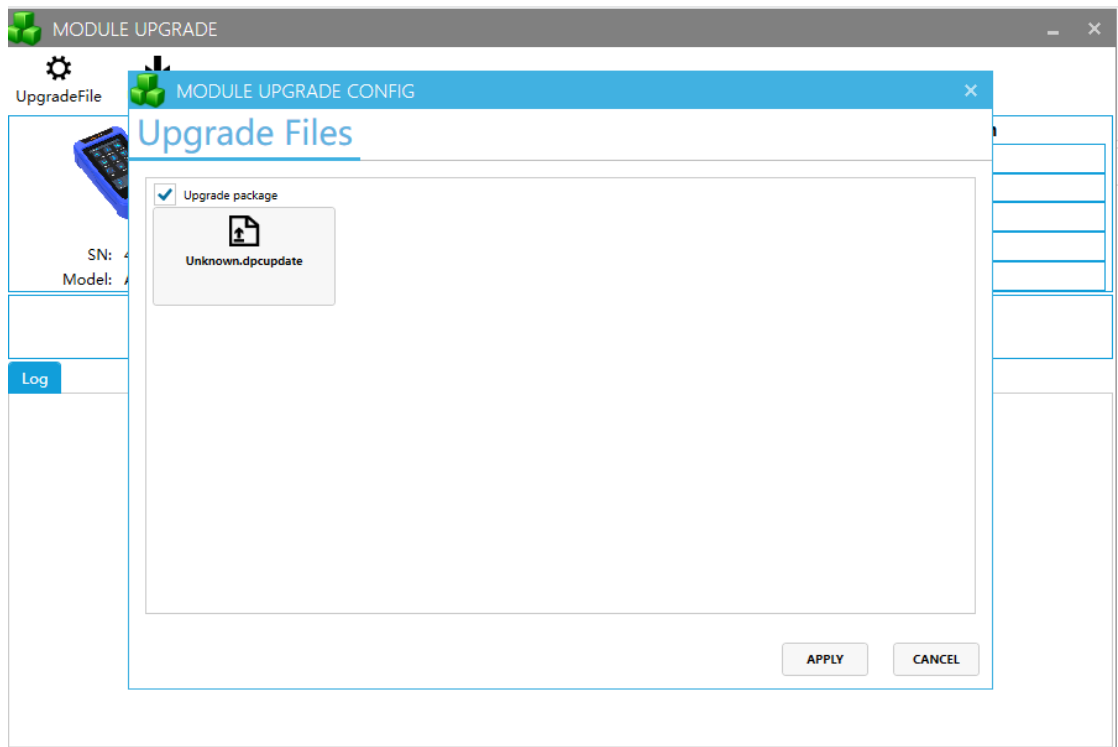
•

•

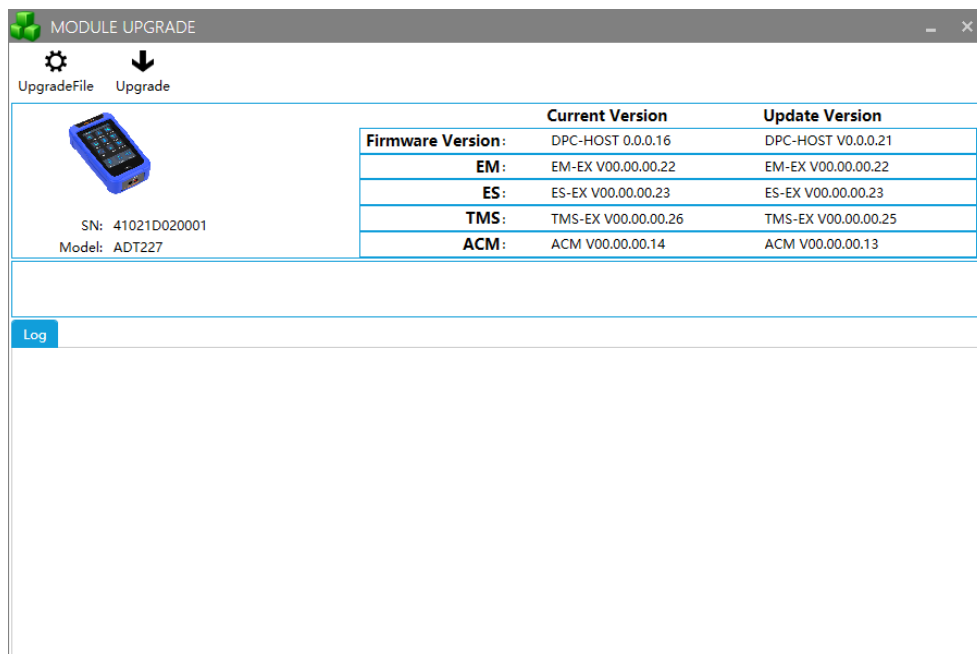
Reading the current version number

Log



After the upgrade page is initialized, click the button [UpgardeFile] in the upper left to select the local upgrade package.




Click the icon to select the local upgrade file. Then click the button [APPLY] to jump to the last screen.



After the UpgradeFile is loaded,click the button [Upgrade] to start upgrading.

UpgradeFile
Upgrade





SN: 41021D020001
Model: ADT227


	Current Version	Update Version
Firmware Version:	DPC-HOST 0.0.0.16	DPC-HOST V0.0.0.21
EM:	EM-EX V00.00.00.22	EM-EX V00.00.00.22
ES:	ES-EX V00.00.00.23	ES-EX V00.00.00.23
TMS:	TMS-EX V00.00.00.26	TMS-EX V00.00.00.25
ACM:	ACM V00.00.00.14	ACM V00.00.00.13

Log

Begin Upgrade : 9/1/2021 1:53:21 PM
File : DPCv0.0.0.21.dpcupdate Upload

UpgradeFile
Upgrade



SN: 41021D020001
Model: ADT227

	Current Version	Update Version
Firmware Version:	DPC-HOST 0.0.0.16	DPC-HOST V0.0.0.21
EM:	EM-EX V00.00.00.22	EM-EX V00.00.00.22
ES:	ES-EX V00.00.00.23	ES-EX V00.00.00.23
TMS:	TMS-EX V00.00.00.26	TMS-EX V00.00.00.25
ACM:	ACM V00.00.00.14	ACM V00.00.00.13

Update succeeded

Log

Begin Upgrade : 9/1/2021 2:11:08 PM
File : DPCv0.0.0.21.dpcupdate Upload
File : Upload Complete
Upgrade Package : CRC verification of upgrade file sent to the device succeed
Upgrade Complete : 9/1/2021 2:15:10 PM
Upgrade Complete : Start to execute update program in the product,please wait for the product response

The device upgrade is complete.

Note: Software cannot be closed during the upgrade.